

# The Wise Vehicle Inspection Report™

## 1970 Dodge Challenger R/T 440 Six Pack, 4 speed Convertible

The following is a summary of the results of an **Elite hands-on vehicle review** performed by MMC Detroit along with conversations with the requestor. The results of the review were communicated to the requestor. There were no disclosures made by the owner or auction facility could be found. This vehicle has been recorded in the MMC Detroit Vehicle Registry. There was no negative information discovered related to this vehicle during an internet search. This vehicle was not witnessed being started and driven.

General Information	Comments
MMC Detroit Reference Job Number	<b>1118-2496</b>
MMC Detroit Global Registry Number	<b>1118-35,187</b>
Vehicle Identification Number (VIN)	<b>JS27 V0B 209752</b>
Vehicle S.O. Number	<b>B05-JB- 088393</b>
Inspection Date and Location	<b>North Carolina</b>
Original Selling Dealer and in-Service Date	<b>Unknown at this time</b>
Original Report Date:	<b>4/3/2019</b>
General Estimated Overall Condition (See table in the report)	<b>2.5</b>

### Conclusion:

This review was of an original and very rare 1970 Dodge Challenger R/T convertible with a 440 Six Pack V8 HP MAGNUM engine, with a new Process Gear 4 speed and Dana 60 series axle. This vehicle was built at Hamtramck Assembly plant. The restoration appears to be about 15 years old and is in good condition. It has had some recent upgrades to the restoration including and engine rebuild. The vehicle has a very solid foundation with many original parts. Overview of the features of the above vehicle:

- Rare and low production
- Better than average restoration
- Excellent structural integrity
- Nicely optioned vehicle
- Original OEM VIN tag in place
- Original OEM trim tag in place
- Engine: Period correct 440 CID HP
- Transmission: Numbers matching 4 speed
- Axle: Dana 60 series



*David Wise*

MMC Detroit LLC  
Managing Partner





## Summary of Findings:

	Item	Discovery
<b>1</b>	Monroney (Window sticker)	Not presented at the time of the review
	Warranty documents	Not presented at the time of the review
	Owner's manual	Not presented at the time of the review
	Owner history	Not presented at the time of the review
	Broadcast Sheet	Not presented at the time of the review.
	IBM Card (s)	Not presented at the time of the review
	Internet research	Completed with no negative results
	Restoration documentation	Not presented at the time of the review

	Item	Discovery	Numbers Matching	
			Y	N
<b>2</b>	VIN tag	OEM VIN tag is on the dash pad	✓	
	Trim tag	OEM trim tag on the LH inner fender	✓	
	Body VIN Primary	OEM Impact stamped VIN on upper LH side of the radiator core support	✓	
	Body VIN Secondary	OEM Impact stamped VIN on LH side of the upper cowl	✓	
	Transmission VIN	OEM Impact stamped VIN on block	✓	
	Engine VIN	Period correct Chrysler 1970 440 Hp block		✓

	Item	Discovery
<b>3</b>	Exterior and paint	No issues found. Paint is in good condition it was graded a 7 out of 10. The material thickness on the body ranged from 9.0 – 25.0
	Chassis/ Frame / Floor Pans	No issues found. All sheet metal is in outstanding condition. The RH and LH quarter panels have been professionally replaced from the center body line down.
	Front Suspension	No issues found. Good condition appears to be in good working order.
	Rear Suspension	No issues found. Good condition.
	Grille and Tail Panel	No issues found. Good condition
	Glass and bright work	No issues found. Good condition.
	Interior	No issues found. Combination of some aftermarket and original parts.
	Engine compartment	No issues found. Good condition without any visible signs of damage. .
	Trunk Compartment	No issues found. Was not able to open at the auction to inspect. Original trunk floor extensions with viable die lot stamp numbers
	Wheels / Tires	No issues found. Aftermarket I tires
	Exhaust system	No issues found

**Exceptions/ Comments:** None





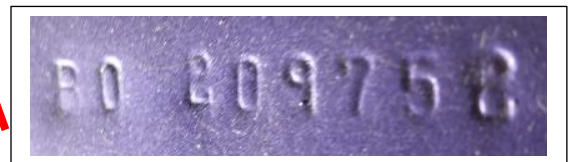
## Vehicle Images References



OEM Factory VIN tag



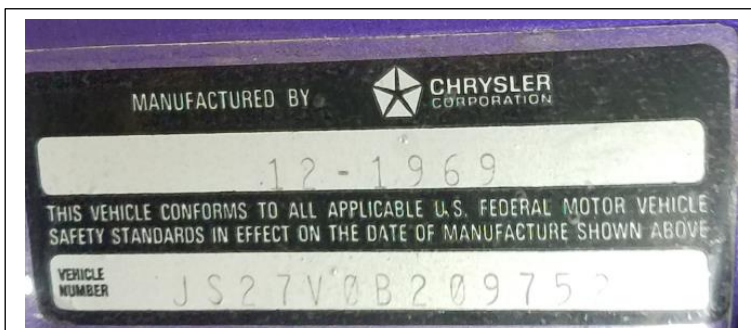
OEM factory vehicle trim tag



OEM Factory correct secondary  
VIN stamp on the upper cowl



OEM Factory correct primary VIN stamp  
on radiator core support





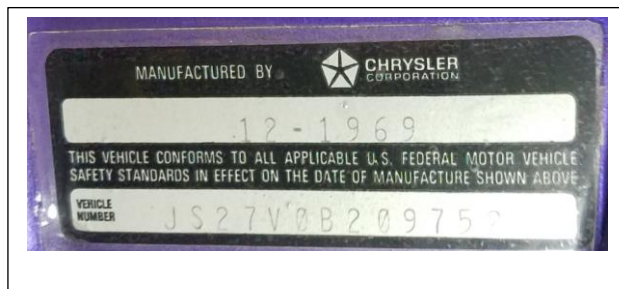
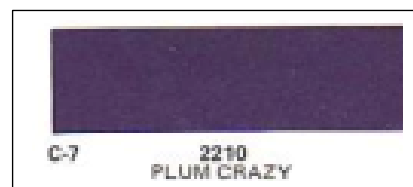
## Trim Tag Review

**MMC Detroit LLC**

Job#1118-2496

[www.MMC Detroit.com](http://www.MMC Detroit.com)

Code	Description
E87	Engine: 440 CID 3x2 bbl 390 HP V8 MAGNUM
D21	Transmission: Manual A833 4 speed with Hurst pistol grip shifter
JS	Car line: Dodge Challenger R/T
27	Body type: 2 door convertible
V	Engine: 440 CID 3x2 bbl 390 HP V8 MAGNUM
0	Model year: 1970 (F series)
B	Assembly plant: Hamtramck assembly
209752	Plant: Sequence number
FC7	Body Color: Plum crazy Hi impact extra cost \$14.05
H	Grade: High
6	Front seats: Vinyl buckets
X9	Interior: Black
000	Upper door frame paint: None
C05	Scheduled assembly date: December 5, 1969
088393	Vehicle order number (VON)
V3X	Top: Black convertible top
A01	Light group.
A33	Axle package: Track Pac w/ Dana 60 series 3.54:1
A62	Rallye Instrument cluster
B51	Power brakes
C16	Center console with woodgrain top
C55	Front bucket seats
J45	Hood pins
N41	Dual exhaust system
N42	Bright chrome exhaust tips
N85	Tachometer
P37	Power convertible top
R22	Radio: AM stereo 8 track
V68	Stripe: delete
Y05	Order: Built to USA specifications
26	Radiator Diameter 26"
EN1	End of options code line 1 designation
92	Body shop inspector impact stamp





## General Exterior images

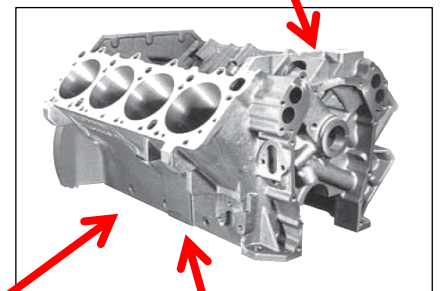
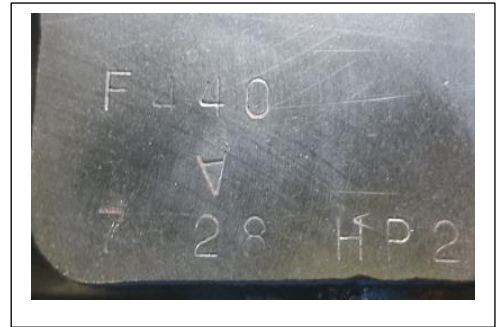






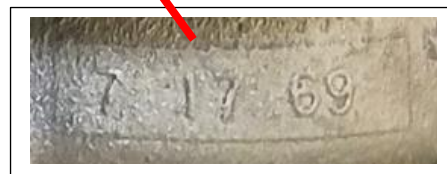
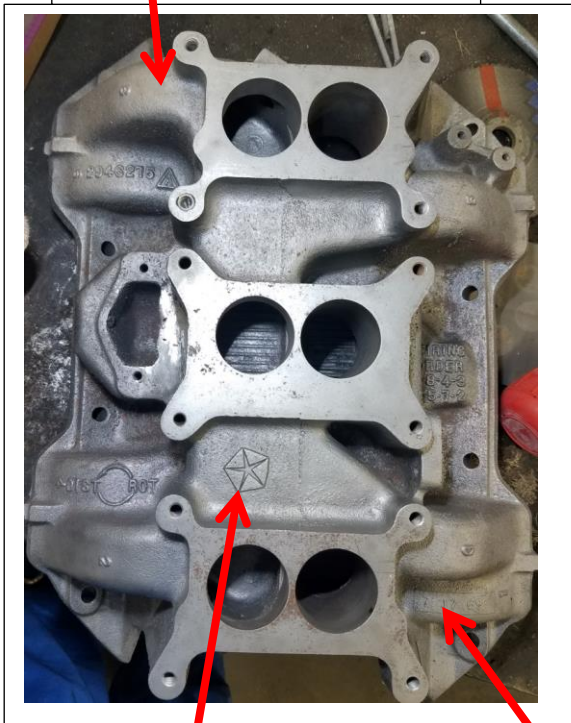
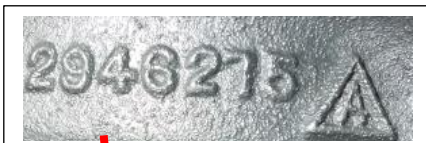
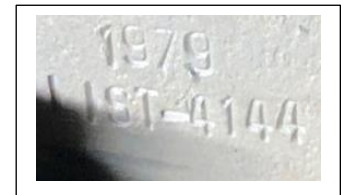
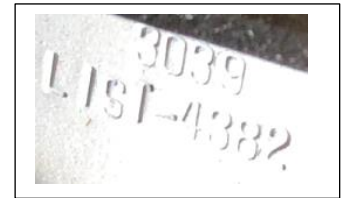
**Powertrain Review: Engine 440 HP V8.** Period Correct block with period correct components. The block and crankshaft is all machined and ready to be assembled.

Checked	Component	Comments
✓	Vin stamp	No stamp on block. It was machined off
✓	Block casting	# 2536430-8 5/18/69
✓	Engine build date	7/28 HP2 F 440
No	Distributor	Correct is IBS-4017D
✓	RH Ex manifold	2899879 12/8/69
✓	LH Ex manifold	2951865-2 10/6/69
No	Alternator	Correct is #3438172
✓	Carburetor: Holly	2300 series correct 4383 262 of 69, 4383 303 of 69 & C4144 197 of 69
✓	Intake Manifold	Original early cast iron 2946275 dated 7/17/69
✓	Water pump hsg	Correct is 2780987
✓	Radiator:	2998959
✓	Rad shroud	2998326
✓	Fan 7 blade	Correct is 2863216
✓	Cylinder heads	Correct 2843906-7 7/09/69
✓	Oil pump	Correct is 2203060
✓	Fuel pump	Correct is 3420835 4845S
No	Starter	Correct style. Original one is 287560/ solenoid hsg 2875553
✓	Air cleaner	Original
✓	Valve covers	Correct
✓	Balancer	Correct





## Engine Components





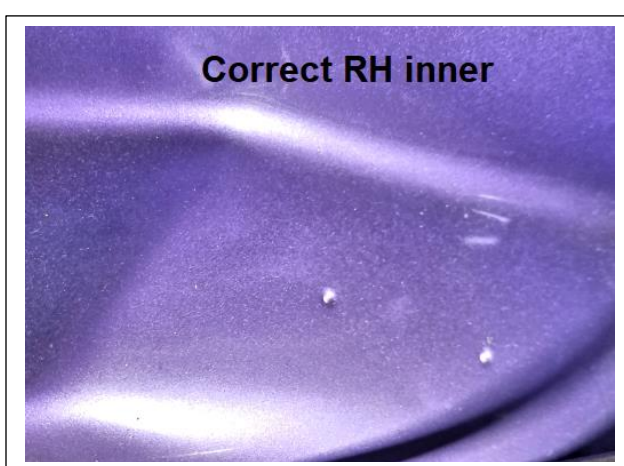






## Engine Compartment

Checked	Component	Comments
✓	Cowl	No issues proper configuration
✓	Fire wall	No issues proper configuration
✓	Radiator core support	No issues proper configuration
✓	LH inner fender	No issues proper configuration
✓	RH inner fender	No issues proper configuration
✓	Hood	Early without crush zone
✓	Wiper motor	Correct 1971 replacement

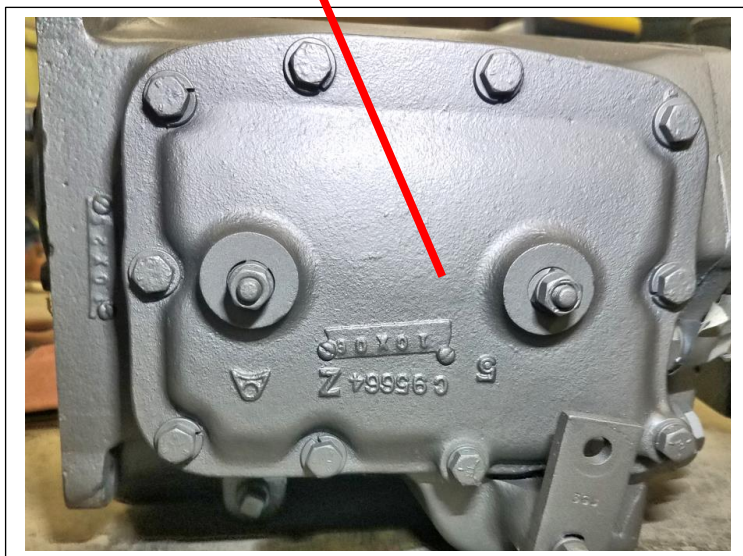
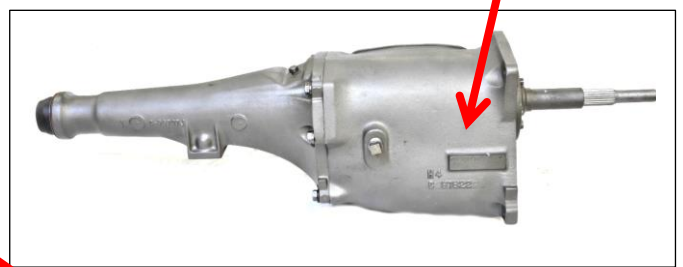
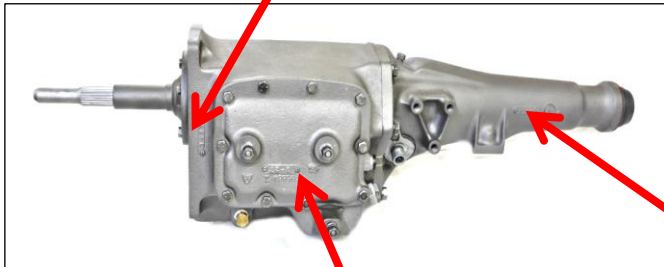
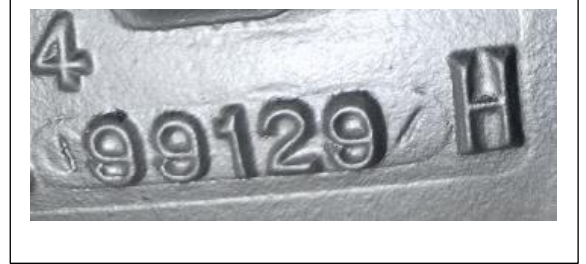




**Transmission:**

Original New Process Gear A833 4 speed with Hurst "pistol grip" shifter.

Checked	Component	Comments
✓	Main case casting Number	C99129 H
✓	Trans build date	3031
✓	Main case casting date	10/29
✓	Tail shaft casting number	Correct C99539 11/24
✓	Side cover casting number	Correct C95664Z 10/08
✓	Drive shaft	Correct
✓	Clutch cover	Correct



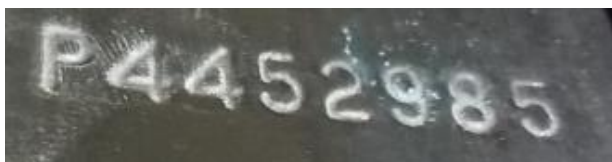
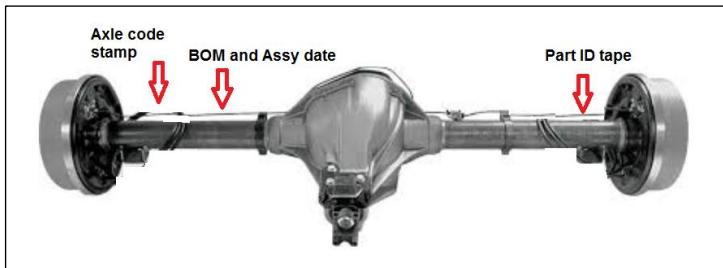
## Axle Assembly/ Rear Suspension

The chassis is in good condition

Checked	Component	Comments
✓	Carrier type / Casting	Dana 60 /C34155
✓	Assembly Number	Never seen
✓	Leaf springs RH	Aftermarket
✓	Leaf springs LH	P4452985
✓	Rear strap date	Never seen
✓	Shocks	Aftermarket

### Bill of Materials Numbers:

69-71 E body 3.54 Powr-Lok 603080-1, -2, -4  
 4.10 Powr-Lok 603080-3, -5  
 4.56 Powr-Lok 603080-6, -7  
 70-72 E body 3.54 Trac-Lok 603226-1, -2  
 4.10 Trac-Lok 603226-4





**Axle Ratios**

	225 Cu. In.	318 Cu. In.	340 Cu. In. 4-bbl.	383 Cu. In. 2-bbl.	383 Cu. In. 4-bbl.	426 Cu. In. R/T Only	440 Cu. In. R/T Only
<b>Manual 3-spd.</b>							
Standard .....	3.23	3.23	3.23	—	3.23	—	—
Optional .....	—	—	—	—	—	—	—
Sure-Grip .....	3.23	3.23	3.23	—	3.23	—	—
<b>Manual 4-spd.</b>							
Standard .....	—	3.23	3.23	—	3.23	—	—
Optional .....	—	—	3.23	—	—	—	—
Sure-Grip .....	—	3.23	3.55†, 3.91†	—	3.23 3.55†, 3.91†	3.54† 4.10†	3.54 4.10†
<b>Automatic</b>							
Standard .....	3.23	2.76	3.23	2.76	3.23	3.23†	3.23†
Optional .....	2.76	3.23	3.23	3.23	2.76	—	—
Sure-Grip .....	3.23	3.23	3.55†, 3.91†	3.23	3.23 3.55†, 3.91†	3.23† 3.55†, 4.10†	3.23† 3.55†, 4.10†

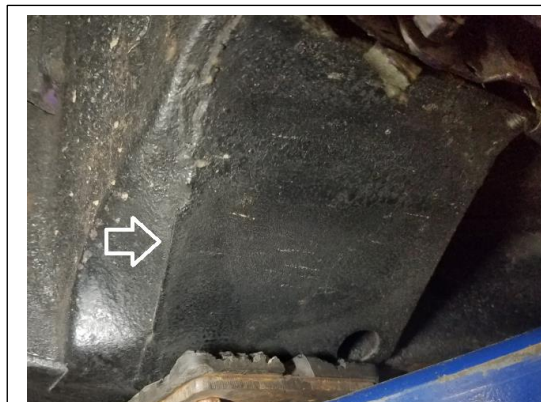
† N.A. w/air conditioning. ‡ Optional.



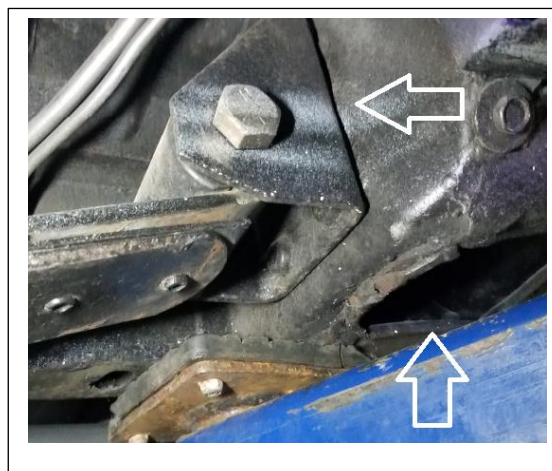
## Chassis, Frame and Suspension

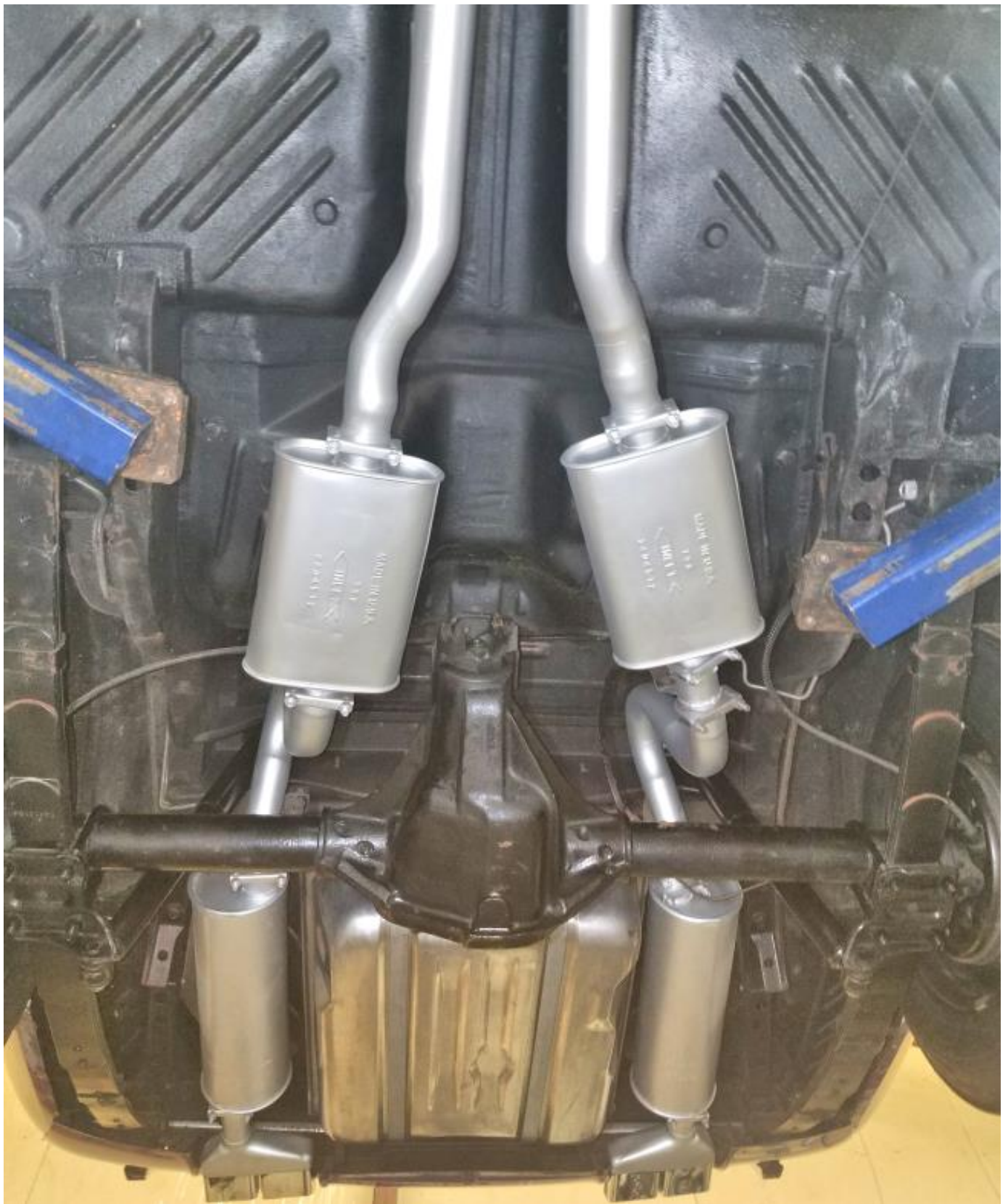
The chassis is in good condition

Checked	Component	Comments
✓	Front RH/LH front torque box	In place No issues
✓	Rear torque box	In place No issues
✓	RH/LH rear torque box inner plates	In place No issues
✓	Front Anti-sway bar	In place No issues
✓	Pinion snubber plate	In place No issues
✓	Correct fuel line	In place No issues
✓	Radiator core support	In place No issue
✓	Torsion bar RH .92 x 41"	1857780
✓	Torsion bar LH .92 x 41"	1857781
✓	Cowl and fire wall	In place No issues
✓	K correct with skid plate #77	In place date 338 69
✓	LCA – RH/LH	LH921/294 & RH 912/314
✓	Steering gear box	In place F11012R

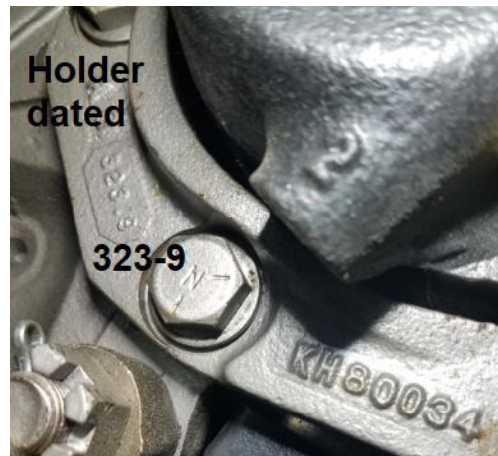
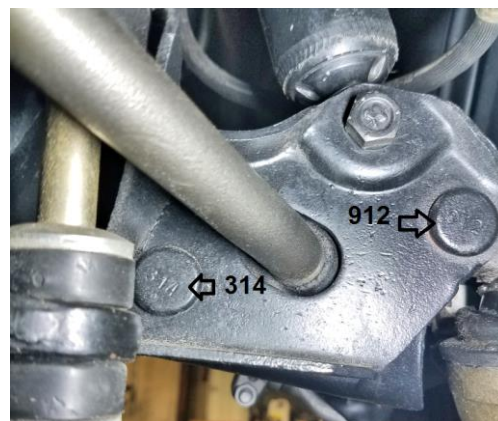















## Interior

The interior is in good condition





**1969-70 Chrysler 10,000 day Production Calendar**

1969 Build Date Table								1970 Model Production											
Day	Jan	Feb	Mar	Apr	May	June	July	Aug.	Sept.	Oct.	Nov.	Dec.							
1	2714	2745	2773	2804	2834	2865	2895	2926	2957	2987	3018	3048							
2	2715	2746	2774	2805	2835	2866	2896	2927	2958	2988	3019	3049							
3	2716	2747	2775	2806	2836	2867	2897	2928	2959	2989	3020	3050							
4	2717	2748	2776	2807						2990	3021	3051							
5	2718	2749	2777	2808	<div>Scheduled vehicle production date</div>					2991	3022	3052							
6	2719	2750	2778	2809						2992	3023	3053							
7	2720	2751	2779	2810						2993	3024	3054							
8	2721	2752	2780	2811						2841	2872	2902	2933	2964	2994	3025	3055		
9	2722	2753	2781	2812	2843	2874	2904	2935	2966	2995	3026	3056							
10	2723	2754	2782	2813	2844	2875	2905	2936	2967	2996	3027	3057							
11	2724	2755	2783	2814	2845	2876	2906	2937	2968	2997	3028	3058							
12	2725	2756	2784	2815	2846						2999	3030	3060						
13	2726	2757	2785	2816	2847	<div>Transmission assembled</div>					3000	3031	3061						
14	2727	2758	2786	2817	2848						3001	3032	3062						
15	2728	2759	2787	2818	2849						2880	2910	2941	2972	3002	3033	3063		
16	2729	2760	2788	2819	2850						2881	2911	2942	2973	3003	3034	3064		
17	2730	2761	2789	2820	2851	2882	2912	2943	2974	3004	3035	3065							
18	2731	2762	2790	2821	2852	2883	2913	2944	2975	3005	3036	3066							
19	2732	2763	2791	2822	2853	2884	2914	2945	2976	3006	3037	3067							
20	2733	2764	2792	2823	2854	2885	2915	2946	2977	3007	3038	3068							
21	2734	2765	2793	2824	2855	<div>Engine casting date</div>					2947	2978	3008	3039	3069				
22	2735										2948	2979	3009	3040	3070				
23	2736	<div>Engine assembly date</div>									2857	2888	2918	2949	2980	3010	3041	3071	
24	2737										2858	2889	2919	2950	2981	3011	3042	3072	
25	2738	2770	2800	2830	2859	2890	2920	2951	2982	3012	3043	3073							
26	2739	2740						2952	2983	3013	3044	3074							
27	2741	2772						2800	2831	2861	2892	2922	2953	2984	3014	3045	3075		
28	2742						2893	2923	2954	2985	3015	3046	3076						
29	2743						2802	2833	2863	2894	2924	2955	2986	3016	3047	3077			
30	2744						2864	2925	2956	3017		3078							
31																			



**Chrysler Production Schedule: 1970 Model Year Cont.**



**1970 Build Date Table**

Day								1971 Model Production				
	Jan	Feb	Mar	Apr	May	June	July	Aug.	Sept.	Oct.	Nov.	Dec.
1	3079	3110	3138	3169	3199	3230	3260	3291	3322	3352	3383	3413
2	3080	3111	3139	3170	3200	3231	3261	3292	3323	3353	3384	3414
3	3081	3112	3140	3171	3201	3232	3262	3293	3324	3354	3385	3415
4	3082	3113	3141	3172	3202	3233	3263	3294	3325	3355	3386	3416
5	3083	3114	3142	3173	3203	3234	3264	3295	3326	3356	3387	3417
6	3084	3115	3143	3174	3204	3235	3265	3296	3327	3357	3388	3418
7	3085	3116	3144	3175	3205	3236	3266	3297	3328	3358	3389	3419
8	3086	3117	3145	3176	3206	3237	3267	3298	3329	3359	3390	3420
9	3087	3118	3146	3177	3207	3238	3268	3299	3330	3360	3391	3421
10	3088	3119	3147	3178	3208	3239	3269	3300	3331	3361	3392	3422
11	3089	3120	3148	3179	3209	3240	3270	3301	3332	3362	3393	3423
12	3090	3121	3149	3180	3210	3241	3271	3302	3333	3363	3394	3424
13	3091	3122	3150	3181	3211	3242	3272	3303	3334	3364	3395	3425
14	3092	3123	3151	3182	3212	3243	3273	3304	3335	3365	3396	3426
15	3093	3124	3152	3183	3213	3244	3274	3305	3336	3366	3397	3427
16	3094	3125	3153	3184	3214	3245	3275	3306	3337	3367	3398	3428
17	3095	3126	3154	3185	3215	3246	3276	3307	3338	3368	3399	3429
18	3096	3127	3155	3186	3216	3247	3277	3308	3339	3369	3400	3430
19	3097	3128	3156	3187	3217	3248	3278	3309	3340	3370	3401	3431
20	3098	3129	3157	3188	3218	3249	3279	3310	3341	3371	3402	3432
21	3099	3130	3158	3189	3219	3250	3280	3311	3342	3372	3403	3433
22	3100	3131	3159	3190	3220	3251	3281	3312	3343	3373	3404	3434
23	3101	3132	3160	3191	3221	3252	3282	3313	3344	3374	3405	3435
24	3102	3133	3161	3192	3222	3253	3283	3314	3345	3375	3406	3436
25	3103	3134	3162	3193	3223	3254	3284	3315	3346	3376	3407	3437
26	3104	3135	3163	3194	3224	3255	3285	3316	3347	3377	3408	3438
27	3105	3136	3164	3195	3225	3256	3286	3317	3348	3378	3409	3439
28	3106	3137	3165	3196	3226	3257	3287	3318	3349	3379	3410	3440
29	3107		3166	3197	3227	3258	3288	3319	3350	3380	3411	3441
30	3108		3167	3198	3228	3259	3289	3320	3351	3381	3412	3442
31	3109		3168		3229		3290	3321		3382		3443





## Internet Search Reference



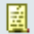
AllMapsVideosImagesShoppingMoreSettingsTools


1 result (0.23 seconds)

**Broadcast Sheets - L&F E Body | Lost & Found, Clubs, Businesses ...**  
[board.moparts.org/ubbthreads/ubbthreads.php/topics/2023/28.html](http://board.moparts.org/ubbthreads/ubbthreads.php/topics/2023/28.html) ▾  
Jul 15, 2011 - 20 posts  
Registered: 10/31/06. Posts: 217. Loc: Columbia Station, Ohio, United... Looking for the Broadcast sheet for a 70 Challenger :JS27V0B209752.

*In order to show you the most relevant results, we have omitted some entries very similar to the 1 already displayed.*

*If you like, you can [repeat the search with the omitted results included](#).*

 **Re: Broadcast Sheets - L&F E Body** [Re: moparts] #2577 - 04/16/12 06:04 PM

**68cornetr**   
enthusiast  
  
Registered: 10/31/06  
Posts: 217  
Loc: Columbia Station, Ohio,  
United...

Looking for the Broadcast sheet for a 70 Challenger :JS27V0B209752. Any info would be appreciated. Thanks in advance.  
Email me at [cnelson426@hotmail.com](mailto:cnelson426@hotmail.com) or call me at [\(440\)-346-3492](tel:(440)-346-3492).

**Vehicle Condition Rating Scale**

<b>Condition Scale</b>		<b>The following table was use in the evaluation of the above vehicle</b>	
<b>1</b>		<b>Restored to current maximum professional standards of quality in every area, or perfect original with components operating and appearing as new. A 95-plus point show car that is not driven</b>	
<b>2</b>		<b>Well-restored, or a combination of superior restoration and excellent original. Also, an extremely well-maintained original showing very minimal wear. Many aftermarket items.</b>	
<b>3</b>		<b>Completely operable original or "older restoration" showing wear. Also, a good amateur restoration, all presentable and serviceable inside and out. Plus, combinations of well-done restoration and good operable components or a partially restored car with all parts necessary to complete and/or valuable NOS parts. Good survivor</b>	
<b>4</b>		<b>A drivable vehicle needing little or only minor work to be functional. A deteriorated restoration or a very poor amateur restoration. All components may need restoration to be "excellent", but the car is mostly useable "as is".</b>	
<b>5</b>		<b>Needs complete restoration of body, chassis and interior. May or may not be running, but isn't weathered, wrecked or stripped to the point of being useful only for parts</b>	

**Conditions of Review**

MMC- Detroit LLC, disclaims any warranty, either expressed or implied. MMC Detroit LLC., does not assume or grant any other parties liability in relation with the sale of this vehicle. MMC Detroit makes no representation and disclaims all express, implied and statutory warranties of any kind to the user and/or any third party, including any warranties of accuracy, timeliness, completeness, merchantability and fitness for a particular purpose.

The record of this review by the MMC Detroit LLC representative and applicable photographs will remain on file in our office for a minimum period of 3 years. This report replaces any previous MMC Detroit reports that may have existed

The vehicle review was conducted based on our experience, knowledge, logic, information available and known data at the time of the inspection. We reserve the right to amend the inspection report should information relating to the vehicle authenticity be discovered or presented to us after the inspection has been completed. The findings will be communicated to the original requester of the report.

Most vehicles have traded hands to many individuals through the years and there are some individuals in the collector car hobby that go through pain staking efforts to ensure that every detail is accurate within a nano-micron to the factory process in an effort to deceive or misrepresent the vehicle. This is sometimes challenging to initially detect during the initial review. It is also illegal to intentionally misrepresent a vehicle in most states and countries.

This amendment process is important because in most cases the vehicle is not in an environment nor will the owner allow a forensic study conduct on key items like the VIN tag, trim tag, body stamping numbers, Broadcast sheets, manufactures certification label, powertrain stampings etc. Continuous improvement in reproduction stamps, tags, documentation technology is not for the greater good over the long run, anyway! We do not endorse it.

The amending of the vehicle report will be done in the spirit of continuous improvement in an effort to enhance the car collection experience for current and future owners. Any additional reviews requested at the owner of this car will be at extra cost.

Note: Before this report is used please reach out to MMC Detroit to ensure that this is the latest version of the report





**MMC Detroit LLC**

Job#1118-2496

[www.MMCDetroit.com](http://www.MMCDetroit.com)

**MMC Detroit :**

## **Serving the Mopar Collector Hobby Since 1952.**

Our family has specialized in all aspects of Chrysler, Imperial, Dodge and Plymouth cars since 1952 out of our base operation in Detroit, Michigan, the "Home of the Motor City".

We offer services ranging from appraisals, authenticating, quality inspector, validation, pre-purchase inspections, expert witness, restoration consulting and local and national show judging. MMC Detroit also has developed and published many world class restoration reference manuals that help serve and support the Mopar enthusiast. These manuals are highly detailed, and provide an unprecedented level of information unlike any other manuals in the collector car hobby.

We pride ourselves at keeping informed with all facets of the Mopar automobile hobby relating to muscle/collector cars in order to stay current with the pulse of the hobby and pass valuable information onto our customers. When only the best will do please reach out to us to assist with your Mopar needs.

### **Mission Statement :**

To continuously strive to enhance and advance the Mopar Automobile collector hobby.

### **Our Quality Policy :**

To provide products and services that meet or exceed your expectations at a fair price.

### **Our Goal :**

To be a trusted resource for reliable information, products, and services.

### **Our Objective :**

To share the information and knowledge acquired since 1952 and provide a customer experience second to none. We have established a web site ([www.mmcdetroit.com](http://www.mmcdetroit.com)) that has been developed to be the best source to obtain information relating to all aspects of Mopar automobile hobby from restoration services, parts dealers, car registries etc

Please feel free to contact us for your needs at [info@mmcdetroit.com](mailto:info@mmcdetroit.com)

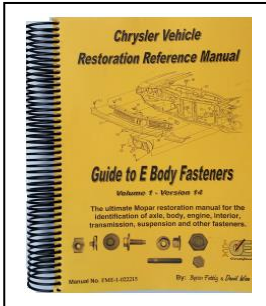


Original MMC brand logo 1952

## Reference Manuals for Chrysler, Dodge and Plymouth

MMC Detroit have been writing one of a kind world class documents and reference manuals for over 25 years. We are continuously upgrading our existing manuals and developing new manuals. No one in the Mopar collector car hobby writes and publishes more objective reference material and us. Visit us at [mmcdetroit.com](http://mmcdetroit.com) for the complete collection of reference material.

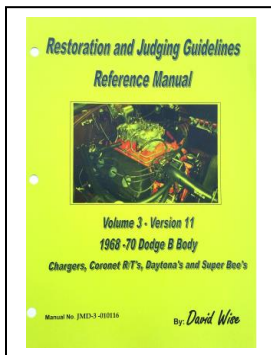
It is important to **"Fill your library before your fill your garage"**.



### Fastener and Assembly Reference Manuals

Each manual contains individual section related to the engine, engine accessories, engine compartment, axle, transmission, front suspension, rear suspension, trunk, interior, gauges, seats, radio, exhaust, fuel, brakes, exterior, grille, tail lights, frame, bumpers, doors etc. Over ~ 750 black and white pages and 5,000 images.

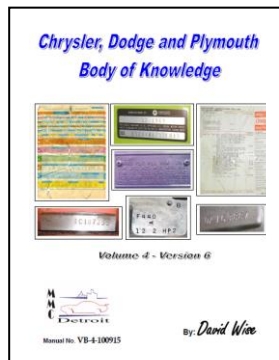
- **1970-74 E body FMEX-1**
- **1968-70 Dodge B body FMDX-2**
- **1968-70 Plymouth B body FMPX-3**
- **1972-82 Dodge and Plymouth SUV/Trucks**



### Restoration and Judging Reference Manuals.

Each manual contains individual section related to the, engine, engine accessories, engine compartment, axle, transmission, front/rear suspension, interior (dash, gauges, console, seats, radio etc.) trunk, glass, stripes, mirror, exterior, fuel, brakes, exhaust, grille, tail lights, frame, bumpers, doors, tires and wheels. They also included paint identification markings, inspector stamps, paint, production information, date codes etc. Over ~2100 black and white pages and thousands of photographs.

- **1970-74 E body JME-1**
- **1968-70 Dodge B body JMD-2**
- **1968-70 Plymouth B body JMP-3**
- **1971-74 Dodge B Body**



### Chrysler, Plymouth and Dodge

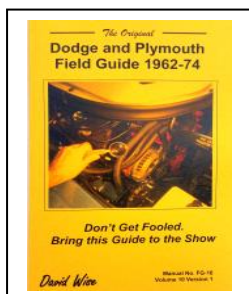
This is a full size guide with black and white pages with thousands of photographs to help understand the important fine points including vehicle VIN's, trim tags, die lot stamp numbers, frame configuration, engines, axles, transmissions etc. and many other items. It briefly covers cars and trucks from the 1920's- 2015. However, the sweet spot of this information is from 1960-74. This manual gives you a brief overview of many important items to review throughout many years and is over 750 pages.

- **Body of Knowledge. VB-4**

### The Original Field Guides

This is a handy pocket size guide is easy to travel with where every you go. It includes 1000 color photos to help understand the important fine points of a vehicle including VIN's, trim tags, die lot stamp numbers, frame configuration, engines, axles, suspension transmissions, interiors etc. and many other items.

- **Dodge and Plymouth 1962-74 Field Guide FG-16 (108 pages)**
- **E bodies 1970-74 FGE-16 (124 pages)**
- **B bodies Dodge and Plymouth 1968-70 FGB-16 (128 pages)**







## Mopar Vehicle Valuation Reference

This information will provide you with some insight into better understanding how to establish the approximate value of a vehicles compared to other similar vehicles in the market place. However, please keep in mind that there are many variables to consider and this is just a guideline.

The first item to consider is the total production of the vehicle. If a vehicle was produced in very small quantities (under 200-300 units) and is highly desirable like a 1970-71 Hemi Cuda Convertible it may not be as strongly affected by a non-numbers matching powertrain component as a more common or less popular model (i.e., base model Road Runner, Super Bee, Charger, Cuda's, Challengers, station wagons, Vans, pick-up trucks etc) might be. The extremely rare vehicle will always be in a category all their own and establishing the true value is very challenging.

Partial factory or dealer documents, rusted or partially legible VIN or trim tags, unreadable numbers stampings on drivetrain parts or the body will impact collectability and the value of a vehicle. The clarity and correctness is of utmost importance in estimating the value of a vehicle.

The following is a list of items to consider and their estimated value by being present.

• Original legible factory production broadcast sheet:	Add 10%
• Original factory vehicle traveler:	Add 1- 2%
• Original consumer information sheet:	Add 2-3%
• Original factory in process inspection documents:	Add 1-2%
• Original hardware and final line build sheet:	Add 10%
• Original IBM card(s):	Add 1- 2% / card.
• Original monroney (Window/suggested list price) sticker:	Add 4%
• Original certicard (1964-68) and/or Warranty Car:	Add 2 - 3%
• Original manufacturer door decal(>1969):	Add 2 - 3 %
• Original advanced dealer shipping notice:	Add 1%
• Original Chrysler issues invoice to the dealer :	Add 1%
• Original new car preparation sheet:	Add ½ -1%
• Original glove box packet (owner's manual and info):	Add 1/4 %
• Desirable paint colors (i.e. High impact, black etc...)	Add +5%
• Non matching engine: ( >1967)	Deduct 15%
• Non matching transmission: (>1967)	Deduct 10%
• No trim tag	Deduct 3-5%
• Missing primary and/or secondary body numbers:	Deduct 25%+

## Other Consideration in Establishing Value

- Vehicle Provenance. The more original factory paperwork always adds to the value of any vehicle.
- All original body panels, frame rails, floor pans etc...
- Original paint, "survivor" cars, factory promotional cars etc...
- Date and part numbers on components (the more the better).
- Correct original accessory and other components (the more the better).
- Having your vehicle validated/certified by a nationally recognized authority
- Highly optioned
- Unique and desired color combination

There is this information in greater detail as well as much more information in the MMC reference restoration manuals that can be ordered on line at [mmcdetroit.com](http://mmcdetroit.com) web site.



## Appendix

### 1970 Reference Option Code Information

ORDER CODE	DESCRIPTION	FACTORY WHOLESALE PRICE	E.H.&O.	FACTORY WHOLESALE PRICE AND E.H.&O.	FACTORY RETAIL PRICE	MANUFACTURER'S SUGGESTED RETAIL PRICE
A36	Performance Axle Package-NA W/ Trailer Towing Pkg-Available - W/340 4BBL Or 383 4BBL W/4-Speed Manual Or Torqueflite Transmission	73.60	5.30	78.90	96.85	102.15
	- W/440 4BBL Or 440 6BBL W/ Torqueflite Transmission	66.40	4.85	71.25	87.40	92.25
	- W/426 Hemi And Torqueflite Transmission Combination	46.35	3.40	49.75	61.00	64.40
D91	Sure Grip Differential-Standard	30.45	2.25	32.70	40.10	42.35
J54	In Performance Axle Packages	15.00	1.20	16.20	19.75	20.95
J45	Performance Hood-Hood Pins (Code J45) Required	11.00	.90	11.90	14.50	15.40
	Hood Pins-Available W/Perf. Hood (Code J54) Only					
<u>PERFORMANCE AND SUSPENSION (Continued)</u>						
S15	Extra Heavy Duty Handling Package-Available 383 4BBL and 340 4BBL Engines Only-Standard 426 Hemi, 440 4BBL and 440 6BBL Engines	13.05	1.05	14.10	17.20	18.25
S25	Firm Ride Shock Absorbers-Standard W/440 And Hemi Engines-Standard W/Extra Heavy Duty Suspension (Code S15)	2.50	.25	2.75	3.30	3.55
<u>POWER EQUIPMENT AND BRAKES</u>						
B11	Heavy Duty Drum Brakes-Front And Rear-Available W/318 And 383 CID Engines-Standard W/Trailer Towing Package (Code A35)	16.25	1.25	17.50	21.40	22.65
S77	Power Steering	68.30	4.95	73.25	85.40	90.35
<u>RADIOS - MODELS WITHOUT BASIC GROUP</u>						
R11	Solid State-AM	44.30	3.25	47.55	58.30	61.55
<u>TRANSMISSIONS</u>						
D21	Manual-4-Speed-Floor Mounted-NA W/198 CID, 225 CID And 383 CID 2BBL Engines	147.30	10.70	158.00	184.15	194.85
<u>W34 COLLAPSIBLE SPARE TIRE - Standard Convertible - Required W/15" Tires</u>						
		9.25	.75	10.00	12.20	12.95
T87	F70x14 BSW W/Raised White Letters-W/318 CID Engine Only - Requires H.D. Drum (Code B11) Or Disc Brakes (Code B41) And H.D. Suspension (Code S13)	58.00	4.25	62.25	76.35	80.60
<u>ELECTRICAL</u>						
F25	Battery-70 AMP-Standard W/440 and Hemi Engines	9.25	.75	10.00	12.20	12.95
<u>ENGINES</u>						
E87	440 CID 8-Cylinder 6BBL-NA W/3-Speed Manual Transmission	188.70	13.65	202.35	235.90	249.55
<u>GLASS</u>						
G15	Windshield Only-Tinted	14.65	1.10	15.75	19.30	20.40





1970 Applicable Option Code Information cont.

**TIRES-ENGINES-TRANSMISSIONS-AXLES**

**MUST CHECK ONE ON ORDER**

SALES CODE	TIRES <sup>①</sup>	CUDA ONLY					
		225	318	383 2 BBL & 383 4 BBL	340	383 4 BBL	440 488L & 440 6 BBL
T25	Blackwall E78x14	STD.	STD.				
T26	Whitewall E78x14	OPT.	OPT.				
T35	Blackwall F78x14	OPT.	OPT.	STD.			
T34	Whitewall F78x14	OPT.	OPT.	OPT.			
T86	Whitewall F70x14		OPT. <sup>④</sup>	OPT. <sup>④</sup>		OPT. <sup>④</sup>	OPT. <sup>④</sup>
T87	Raised White Letters F70x14		OPT. <sup>④</sup>	OPT. <sup>④</sup>		STD.	STD. <sup>③</sup>
U82	Raised White Letters E60x15 <sup>②</sup>				STD.	OPT. <sup>⑤</sup>	OPT. <sup>③</sup>
U84	Raised White Letters F60x15 <sup>②</sup>						STD.

① All Tires Fiberglass Belted.

② Code W34 required except Conv.

③ N/A Conv. with Air Cond.

④ HD Brakes or Disc Brakes & S13 required.

⑤ N/A Trailer Tow.

■ No Cost Option.

**MUST CHECK ONE ON ORDER**

CODE	ENGINES	BARRA-CUDA	GRAN COUPE	CUDA
E24	225 Cu. In. 6 cyl.	STD.	STD.	
E44	318 Cu. In. 8 cyl.	STD.	STD.	
E61	383 Cu. In. 8 cyl. 2 Bbl.	OPT.	OPT.	
E63	383 Cu. In. 8 cyl. 4 Bbl.	OPT.	OPT.	STD.
E55	340 Cu. In. 8 cyl. 4 Bbl. (Includes E60 x 15 Tires)			OPT.
E74	Hemi 426 Cu. In. 8 cyl. 2-4 Bbl.			OPT.
E86	440 Cu. In. 8 cyl. 4 Bbl.			OPT.
E87	440 Cu. In. 8 cyl. 6 Bbl.			OPT.

**MUST CHECK ONE ON ORDER**

CODE	TRANSMISSIONS	225	318	383 2 BBL	383 4 BBL	340 4 BBL	HEMI 2-4 BBL	440 4 BBL	440 6 BBL
D13	3 Speed Manual (Floor Mounted)	STD.	STD.		STD.	STD.			
D21	4 Speed Manual (Floor Mounted)		OPT.		OPT.	OPT.	OPT.	OPT.	OPT.
D34	Torqueflite	OPT.	OPT.	STD.	OPT.	OPT.	STD.	STD.	STD.

**STD. AXLE RATIO WILL BE FURNISHED UNLESS OPTIONAL RATIO\* IS SPECIFIED**

ENGINE	TRANSMISSION	CODE	D51	D53	(D91) SURE GRIP*	PERFORMANCE AXLE PKGS. *				
		RATIO	2.76	3.23	D53	A36	A31	A32	A33	A34
						HD 3.55	HD 3.91	HD 4.10	HD 3.54	HD 4.10
225	3 Speed Manual			STD.	STD.					
	Automatic	OPT.		STD.	STD.					
318	3 Speed Manual			STD.	STD.					
	4 Speed Manual			STD.	STD.					
383 2-Bbl.	Automatic		STD.	OPT.	STD.					
	3 Speed Manual			STD.	STD.					
383 4-Bbl.	4 Speed Manual			STD.	STD.	OPT.	OPT.			
	Automatic	OPT.		STD.	STD.	OPT.	OPT.			
340 4-Bbl.	3 Speed Manual			STD.	STD.					
	4 Speed Manual			STD.	STD.	OPT.	OPT.			
Hemi 2-4 Bbl.	Automatic			STD.	STD.				OPT.	OPT.
	4 Speed Manual			STD.	STD.	OPT.		OPT.		
440 4-Bbl.	Automatic			STD.	STD.				OPT.	OPT.
	4 Speed Manual			STD.	STD.	OPT.		OPT.		
440 6-Bbl.	Automatic			STD.	STD.				OPT.	OPT.
	4 Speed Manual			STD.	STD.	OPT.		OPT.		

## 1970 Applicable Dodge Features

### Challenger R/T and Challenger 2-door hardtop and convertible standard trim

Full-foam, all-vinyl bucket seats with head restraints integrated in the high backs are standard in Challenger R/T and Challenger 2-door hardtops and convertibles. The all-vinyl trim is available in blue, red, burnt orange, black, green, tan, and white.



**Hood Hold-Down Pins, Code J45.** Nascar-type hood hold-down pins add to the performance look of Challenger R/T.



**Racing-Type Remote-Control Left Outside Rear-view Mirror** makes it simple and easy to adjust the mirror to suit the driver from inside the car. Particularly convenient when more than one person uses the car. Available in chrome or in Bright Blue, Medium Red, Banana, Sub-Lime, and Hemi Orange.



This hubcap is standard on all models equipped with 14-inch wheels.



**Rallye Instrument Cluster.** Fully instrumented with gauges for gasoline, oil pressure, engine temperature, ammeter, plus a clock and tachometer.

**Performance Hood.** Baffles in the hood scoops can be removed to permit outside air to rush in.



### 4-Speed Manual

Floor-mounted or console-mounted only, there are two four-speed manual transmissions with Hurst Shifter and reverse warning light. One with a 2.47 low gear is used with the 318, 340, and 383 engines. The other with a 2.44 low gear is used with the 440 and 426 engines.

**Availability:** Optional at extra cost with all V-8 engines except the 383 2-bbl. N.A. with Six.





Estimated vehicle Production by Color

Challenger	Hardtop	Convertible	SE	
1970 US Spec only	(V8 only)	(V8 only)	(V8 only)	JHxx
All numbers approximate	JH23	JH27	JH29	Total
	38,091	2,543	5,858	46,492
BL1 Beige	1.6 609	0.8 20	1 59	1.5 697
DY3 Cream	2.6 990	2.2 56	2.2 129	2.6 1,209
EB3 Light Blue Met.	3.5 1,333	3.5 89	2.6 152	3.4 1,581
EB5 Bright Blue Met.	9.6 3,657	9.9 252	7.7 451	9.4 4,370
EB7 Dark Blue Met.	2.8 1,067	2.8 71	2.4 141	2.8 1,302
EF8 Dark Green Met.	7.4 2,819	6.5 165	9 527	7.6 3,533
EK2 Go-Mango	4.4 1,676	4 102	4.5 264	4.4 2,046
EV2 Hemi Orange	3.5 1,333	2.9 74	2.6 152	3.4 1,581
EW1 White	4.2 1,600	3.9 99	4.5 264	4.2 1,953
FC7 Plum Crazy	14.3 5,447	15.5 394	9.4 551	13.8 6,416
FE5 Bright Red	6.7 2,552	12.6 320	4.8 281	6.7 3,115
FF4 Light Green Met.	7.5 2,857	5.3 135	9.4 551	7.7 3,580
FJ5 Sublime	4.1 1,562	3.9 99	3.3 193	4 1,860
FJ6 Green Go	0.5 190	0.1 3	0 0	0.4 186
FK5 Dark Burnt Orange Met.	10.1 3,847	9.5 242	20 1,172	11.5 5,347
FM3 Panther Pink	0.7 267	0.4 10	0.1 6	0.6 279
FT6 Dark Tan Met.	3.6 1,371	2.7 69	5.4 316	3.7 1,720
FY1 Banana	6.1 2,324	9.9 252	4.5 264	6.1 2,836
FY4 Light Gold Met.	3.4 1,295	1.7 43	3.7 217	3.3 1,534
TX9 Black	1.2 457	1.7 43	2 117	1.3 604

Challenger	R/T Hardtop	R/T Convertible	R/T SE	R/T
1970 US Spec only	JS23	JS27	JS29	Total
	13,668	955	3,741	18,364
BL1 Beige	0.3 41	0 0	0.8 30	0.4 73
DY3 Cream	0.7 96	0.6 6	1.6 60	0.8 147
EB3 Light Blue Met.	1.3 178	1.4 13	1.2 45	1.3 239
EB5 Bright Blue Met.	8.3 1,134	7.3 70	7.5 281	8.1 1,487
EB7 Dark Blue Met.	2.9 396	2.8 27	2.5 94	2.8 514
EF8 Dark Green Met.	6.8 929	6 57	7.5 281	6.9 1,267
EK2 Go-Mango	7.1 970	4.5 43	7.5 281	7 1,285
EV2 Hemi Orange	7.2 984	4.5 43	5.2 195	6.6 1,212
EW1 White	2.2 301	4.1 39	3 112	2.4 441
FC7 Plum Crazy	22.2 3,034	23.2 222	16 599	21 3,856
FE5 Bright Red	6.6 902	12.8 122	5.4 202	6.7 1,230
FF4 Light Green Met.	4.1 560	2.8 27	5.3 198	4.3 790
FJ5 Sublime	6.7 916	4.6 44	5.5 206	6.3 1,157
FJ6 Green Go	0.1 14	0.2 2	0 0	0.1 18
FK5 Dark Burnt Orange Met.	7.8 1,066	8.6 82	14.8 554	9.3 1,708
FM3 Panther Pink	0.3 41	0.4 4	0.2 7	0.3 55
FT6 Dark Tan Met.	1.6 219	2.8 27	2.7 101	1.9 349
FY1 Banana	7.6 1,039	8.8 84	6.4 239	7.4 1,359
FY4 Light Gold Met.	1.4 191	1.6 15	2.1 79	1.5 275
TX9 Black	3.7 506	3.4 32	4.9 183	4 735



**1970 Dodge Challenger Advertisement.**



## Challenger. Watch it!

Dodge Challenger is the kind of sports compact you buy when you don't want one like everybody else's. When you'd like a little more living room in the back seat. When you'd appreciate a wider stance that carves curves with extra authority. When you want a look a little cleaner, a door a little thicker, and a choice of engines that starts with a new, livelier, thrifty Six and runs all the way up to the 426 Hemi. The new Dodge Challenger is the kind of sports compact you buy when you want a choice of standard hardtop,

formal hardtop, or convertible. When you want a model choice of the standard Challenger or the R/T. (The R/T offers a special hood and a Rallye Instrument Cluster with simulated walnut dash as standard equipment. Optional on the Challenger.) New Dodge Challenger is the car you buy when you decide you don't want to be like everyone else. There's a big difference between good and great. New Dodge Challenger has it all. And you'll find very little of it is reflected in the price.

**If you have your own idea of what a car should be . . .**

**you could be  
DODGE**



## **Original Vehicle Assembly Plant**

### **Hamtramck Assembly Plant in Hamtramck, MI.**

It was commonly known as Dodge Main. This assembly plant occupied approximately 67 acres on the edge of the city of Hamtramck, Michigan, which is completely surrounded by the city of Detroit; a small portion was in Detroit itself. Plant 4, on Conant Avenue in Detroit, was separated only from the main plant structures by a railroad right-of-way, which was also the boundary line between the two cities.









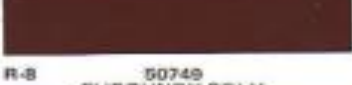

### **Chrysler Headquarters (Highland Park, MI)**

The headquarters for Chrysler Corporation activities from 1910 to 1992 was in Highland Park, MI This city was located within the confines of Detroit. Shown below is the design dome and one of 37 plants and offices located in the Motor City metropolitan area.





## 1970 Dodge Model Year Exterior Color Options

<div> <div> <b>INDEX</b> No. 8           </div> <div>             Dealer Automotive Finishes   </div> <div> <b>1970 DODGE</b>              DART – CHALLENGER – CORONET              CHARGER – POLARA – MONACO           </div> </div>		
SPECIFY: DDL For DURACRYL® acrylic lacquer • DAR For DELSTAR® acrylic enamel • DGE For DITZCO® alkyd enamel		
<b>Paint Code</b>  <b>A-4</b> 2016 SILVER POLY	<b>Paint Code</b>  <b>J-5</b> 2128 SUBLIME	<b>Paint Code</b>  <b>T-6</b> 2129 DARK TAN POLY
 <b>A-9</b> 2017 DARK GRAY POLY	 <b>J-6</b> 2259 GREEN GO	 <b>**V-2</b> 2186 HEMI ORANGE
 <b>B-3</b> 2018 LIGHT BLUE POLY	 <b>K-2</b> 2201 GO MANGO	 <b>W-1</b> 2033 WHITE
 <b>B-5</b> 2019 BRIGHT BLUE POLY	 <b>K-5</b> 2135 DARK BURNT ORANGE POLY	 <b>Y-1</b> 2211 BANANA
 <b>B-7</b> 2020 DARK BLUE POLY	 <b>L-1</b> 2254Z BEIGE	 <b>Y-3</b> 81575 CREAM
 <b>C-7</b> 2210 PLUM CRAZY	 <b>M-3</b> 2260 PANTHER PINK	 <b>Y-4</b> 2117 LIGHT GOLD POLY
 <b>E-5</b> 2136 BRIGHT RED	 <b>Q-3</b> 2127 LIGHT TURQUOISE POLY	 <b>Y-6</b> 2102 GOLD POLY
 <b>F-4</b> 2133 LIGHT GREEN POLY	 <b>R-6</b> 2029 RED	 <b>*999</b> 60436 ORANGE
 <b>*F-6</b> 2103 BRIGHT GREEN POLY	 <b>R-8</b> 50749 BURGUNDY POLY	 <b>*999</b> 44032 RALLYE GREEN
 <b>F-8</b> 43786 DARK GREEN POLY	 <b>T-3</b> 2131 TAN POLY	 <b>*999</b> 81570 BAHAMA YELLOW
<b>X-9</b> 9300 BLACK  *1969 SPRING COLORS ONLY **ALSO 1969 SPRING COLORS	SINGLE TONE – X9-X9 TWO-TONE – X9-W1 FIRST TWO DIGITS ARE ACCENT OR ROOF COLOR, SECOND TWO DIGITS ARE BASIC BODY COLOR	FOR SPECIAL COLORS (CODED 999) FURNISH SPECIAL ORDER (SO) NUMBER AND SELLING DEALER WITH SERIAL NUMBER OF CAR.

## Date Code Reference General Information

We often receive questions as to if a vehicle has the correctly dated parts. The information below can be used as a guide for evaluating the parts on a vehicle. *Note: The information and Illustrations below are just examples and are not from this vehicle.*

### Engine Casting vs. Build Dates:

The standard range is typically around 30-90 days. The more common and high volume production engine (i.e., 318 or 383) the closer the casting date will be to the final assembly date of the engine.

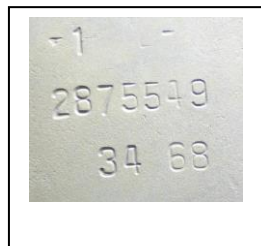
Low production and high performance engines like the 440 +6 could be as high as 90-120 days and Hemi's have been found to be as much as 10-12 months early.

### Engine Accessories:

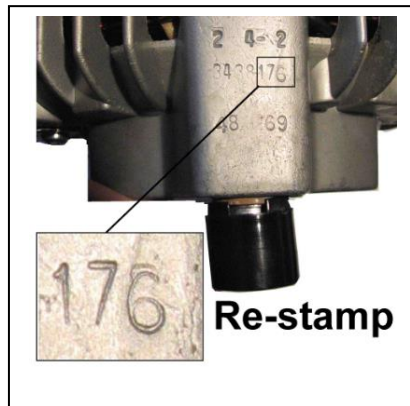
The engine parts and accessories vary but typically they are near the casting date of the engine. However, some parts have both casting dates and assembly dates.

### Part Casting Vs. Build Dates

Keep in mind that both dates have to be reviewed when looking at parts like alternators and starters as an example. The typical starter or alternator will have a casting date and an assembly date. Most people only look at the casting date and assume that it is correct because the year matches the year of the vehicle at it is in. However, typically upon further review the assembly date is not even close.



1969 alternator #28757749.  
The assy date is 34<sup>th</sup> week of 1968 which is August 17-21.  
The casting date= 7<sup>th</sup> month of 1968. This is a difference of 30 days between the casting and assy date.



Because the rare parts are getting hard to find and expensive people are re-stamping to make them look correct.



All water pump housings have a date code on them





## Date Code Reference General Information

Most all parts on a vehicle have a date code on them. The following is a guide of the dates used by Chrysler and their suppliers on production parts.

Model Year	Digit	Series
1958	8	L
1959	9	M
1960	0	P
1961	1	R
1962	2	S
1963	3	T
1964	4	V
1965	5	A
1966	6	B
1967	7	C
1968	8	D
1969	9	E
1970	0	F
1971	1	G
1972	2	H
1973	3	J
1974	4	4
1975	5	5
1976	6	6
1977	7	7
1978	8	8
1979	9	9
1980	A	

Quarter	Numeric	Alpha	Month of year
1	1	A	January
	2	B	February
	3	C	March
2	4	D	April
	5	E	May
	6	F	June
3	7	G	July
	8	H	August
	9	J	September
4	10	K	October
	11	L	November
	12	M	December

Month	Week	Day Range	Month	Week	Day Range
Jan 1 – 7	1	1-7	July	27	183-189
Jan 8- 4	2	8-14	July	28	190-196
Jan 15 – 21	3	15-21	July	29	197-203
Jan 22- 28	4	22-28	July	30	204-210
Jan 29- Feb 4	5	29-35	July	31	211-217
Feb 5 – 11	6	36-42	August	32	218-224
Feb 12- 18	7	43-49	August	33	225-231
Feb 19- 25	8	50-56	August	34	232-238
Feb 26 - Mar 3	9	57-63	August	35	239-245
Mar 4 - 10	10	64-70	September	36	246-252
Mar 11 - 17	11	71-77	September	37	253-259
Mar 18 – 24	12	78-84	September	38	260-266
Mar 25-31	13	85-91	September	39	267-273
Apr 1-7	14	92-98	September	40	274-280
Apr 29- May 5	15	99-105	October	41	281-287
April 15 – 21	16	106-112	October	42	288-294
April 22 – 28	17	113-119	October	43	295-301
April 29 - May 5	18	120-126	October	44	302-308
May 6 – 12	19	127-133	November	45	309-315
May 13-19	20	134-140	November	46	316-322
May 20 - 26	21	141-147	November	47	332-329
May 27- Jun 2	22	148-154	November	48	330-336
June 3 – 9	23	155-161	December	49	337-343
Jun 10-16	24	162-168	December	50	344-350
Jun 17 – 23	25	169-175	December	51	351-357
Jun 24 – 30	26	176-182	December	52	350-356