

RH Front View



LH Front View



RH Rear View



LH Rear View



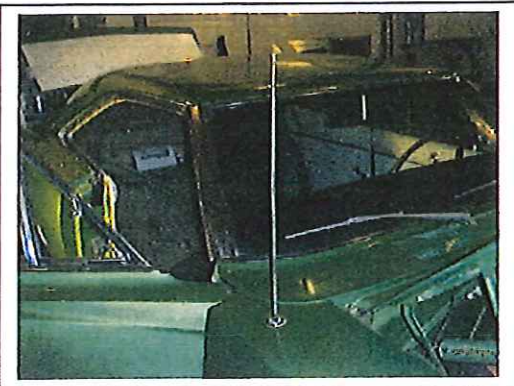
Front of Rear Spring Box/not enclosed.



LH side view.



Antenna



Hood

The hood is from a 1970 Charger.

Engine CID nameplate.

No CID identification on a 1969 440 Charger.

Correct stripe & bezel color.



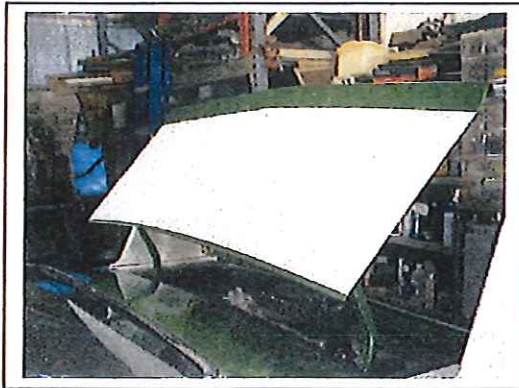
Daytona Grille & turn signals.



Rear Window/Backlight.



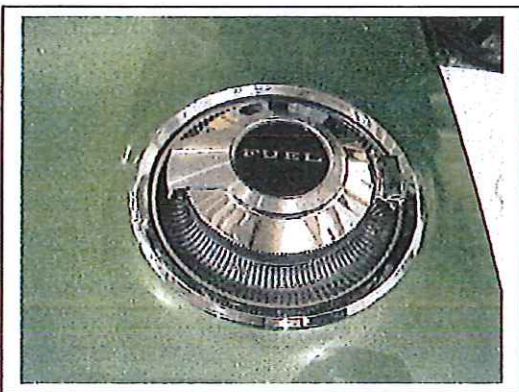
Deck lid and stripe.



Taillights/Exhaust Tips.



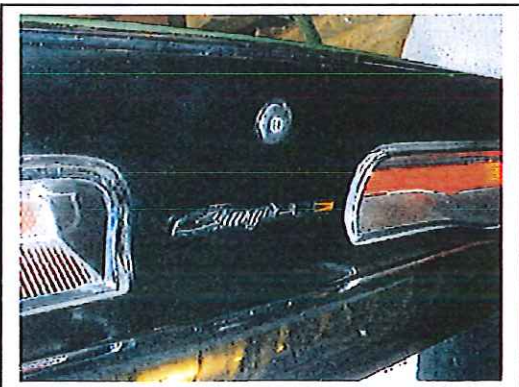
View of fuel inlet-closed.



Fuel cap-open.



"Charger" between taillights-not R/T.



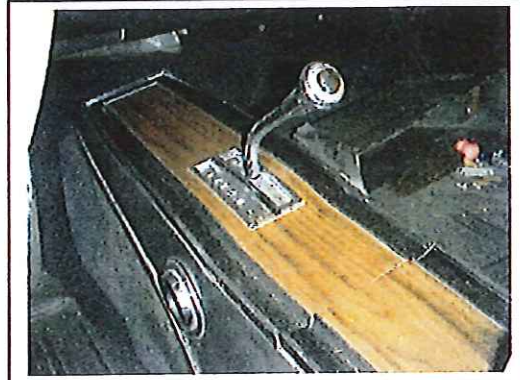
Tire & Wheel. Should be Red or Whitewall.



Front Seat.



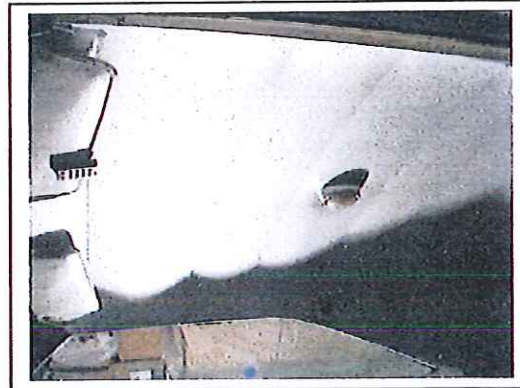
Shifter/Console w/correct shift knob.



Pedals/Dimmer switch without grommet.



White Headliner & Sun Visors.



LH Door Panel



RH Door Panel



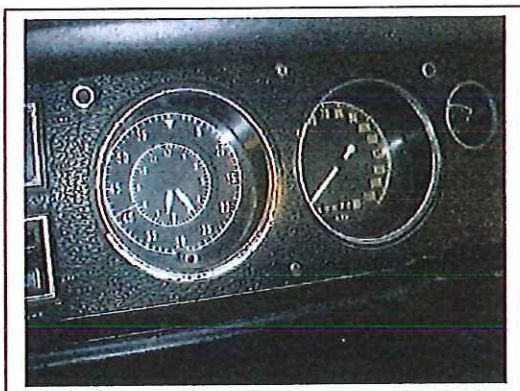
Glove Compartment



Optional Woodgrain Steering Wheel.



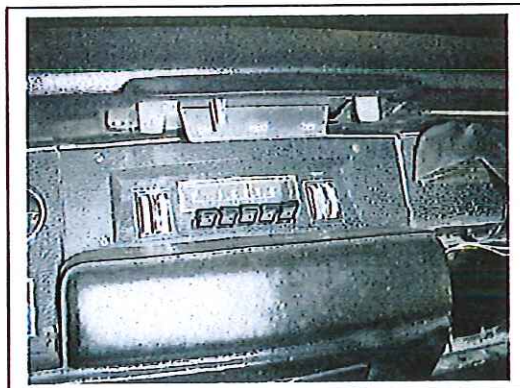
View of Standard Clock.



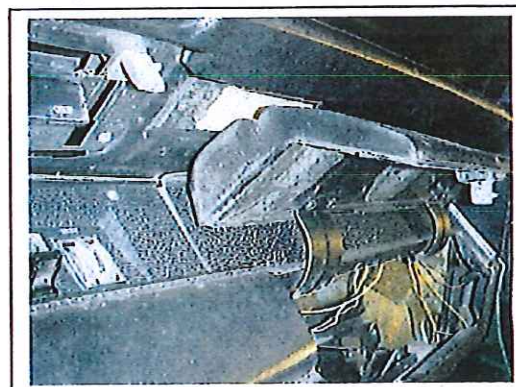
View of Gauges/Wiper & Washer switch.



View of Radio/Heater Controls.



View of Map Light.



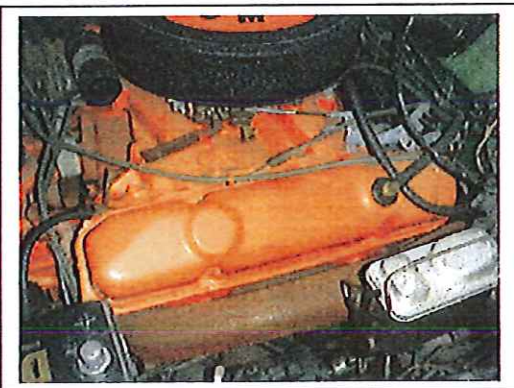
Air Cleaner



Fan **less** spacer.



Incorrect LH Valve Cover & PCV Valve.



Incorrect RH Valve Cover & Coil.



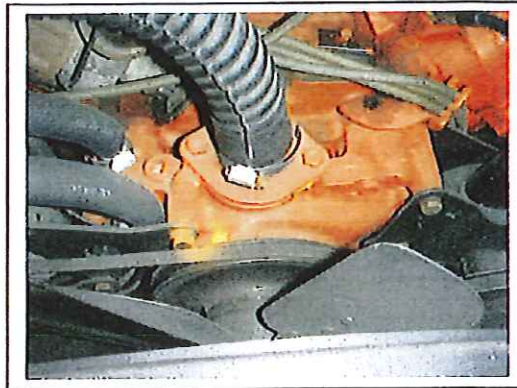
Incorrect choke.



Incorrect Holley Carburetor.

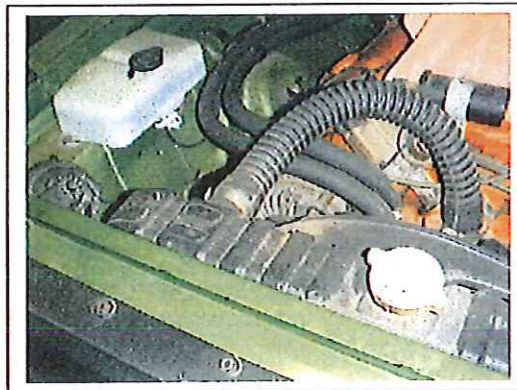


Dual pulley alternator has been found on some cars. **Incorrect alternator bracket to W/Pump bolt.**



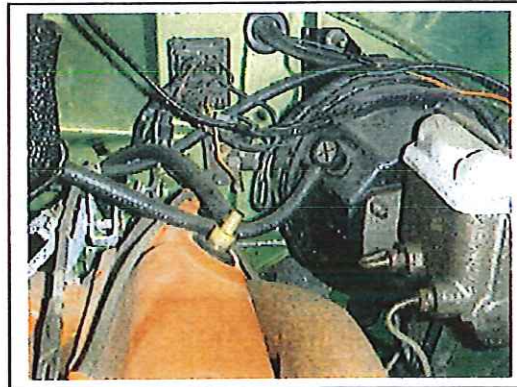
Incorrect Intake Manifold for 1969.

Replacement upper radiator hose.

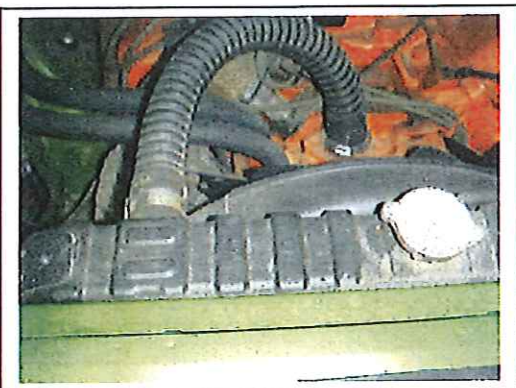


Replacement end on Negative Battery cable.

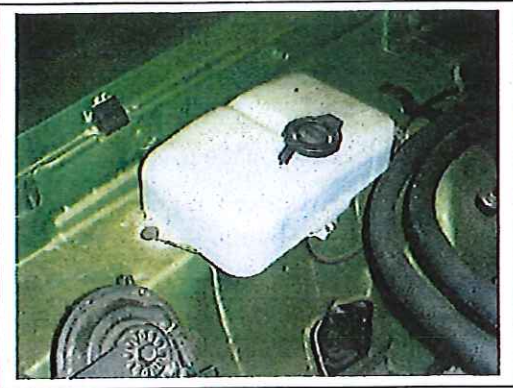
Incorrect PCV Valve.



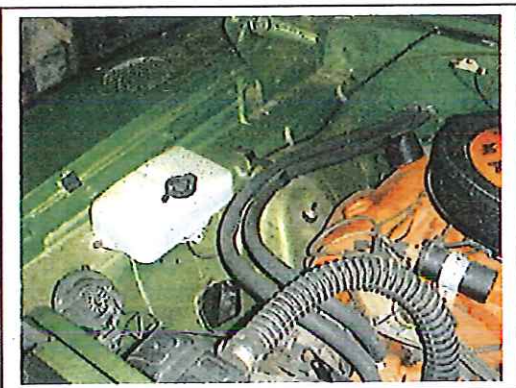
26" Radiator



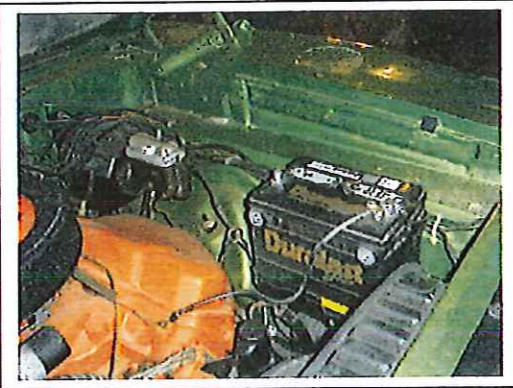
Reproduction washer reservoir.



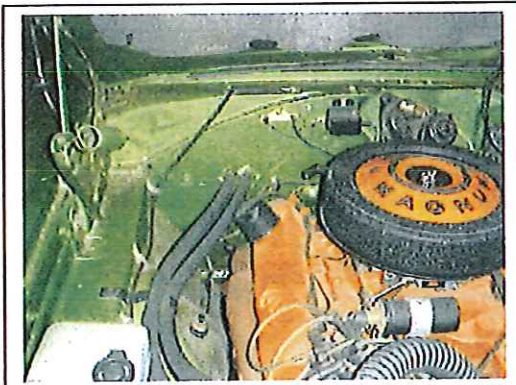
RH Inner Fender/Heater hoses.



LH Inner Fender/Battery.



RH firewall/Voltage regulator.



LH firewall/Master Cylinder/Wiper Motor.



Latch tray.



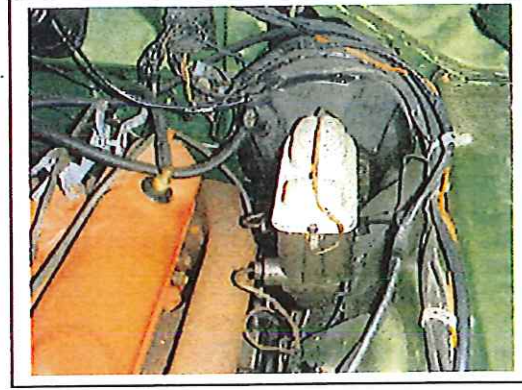
Primary Hood Latch/1970 Charger hood.



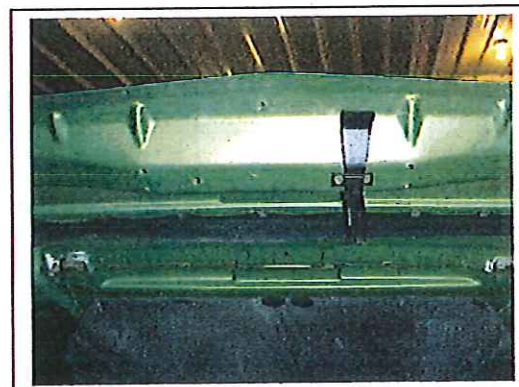
View of Wiper Motor.



View of P/Brake Booster & Master Cylinder.



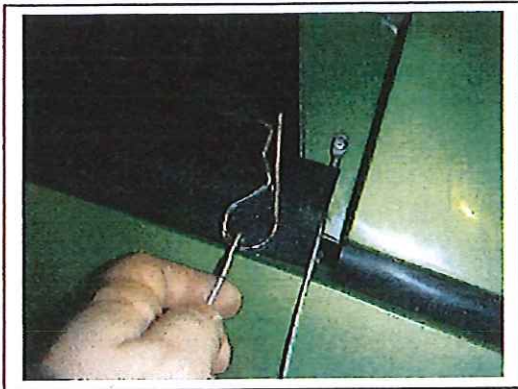
Underside of hood/1970 Charger.



Aftermarket Battery.



Hood pin & post.



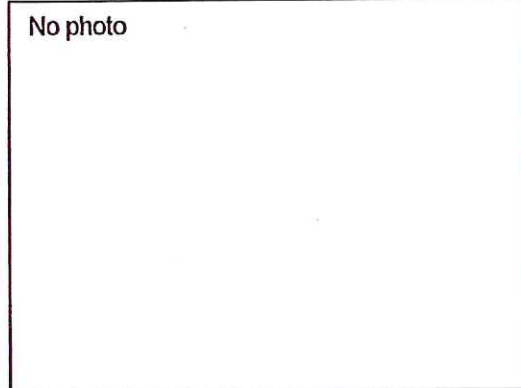
Headlamp vacuum hoses-should be over supt.



Hood seal & insulation pad.



No photo



Power Steering pump less cooler.



Power steering gear/Engine oil dipstick.



K-Frame/Oil pan.



Aftermarket H-pipe w/clamp.



8.75" rear axle.



Axle tube.



Axle to frame bumper.



Floor pan.



Disc Brake valve.



Daytona fender screen.



Lower radiator support.



Front Spoiler.



Automatic Transmission splash shield=missing.



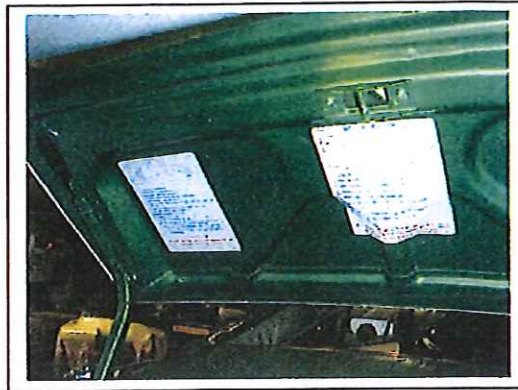
Transmission tail shaft-driveshaft.



Incorrect RWL spare tire.



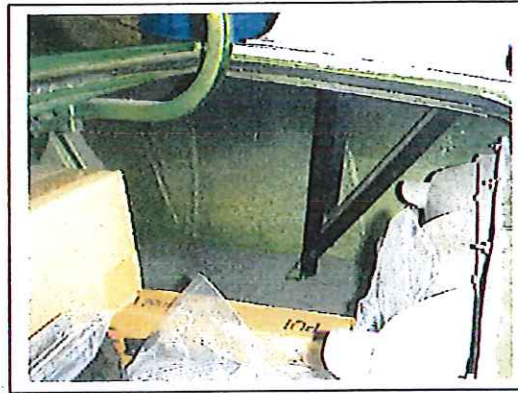
Trunk Lid.



LH Quarter Panel



RH Quarter Panel



Trunk Latch on lid.



Trunk latch on body/missing taillight cover.



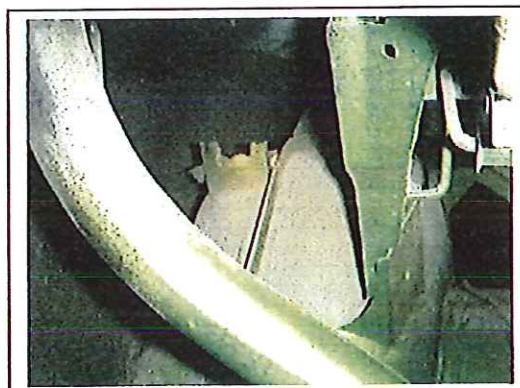
Relocated trunk light tab.

No photo



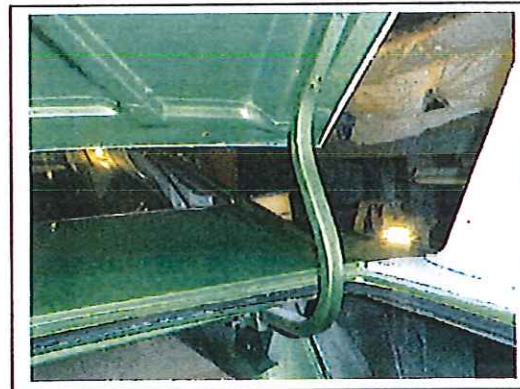
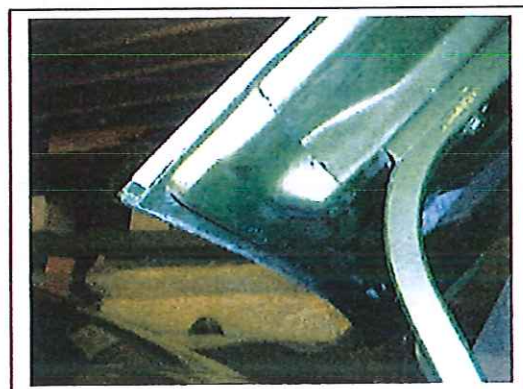
Secondary body code location.

Upper jack rest felt moved back.



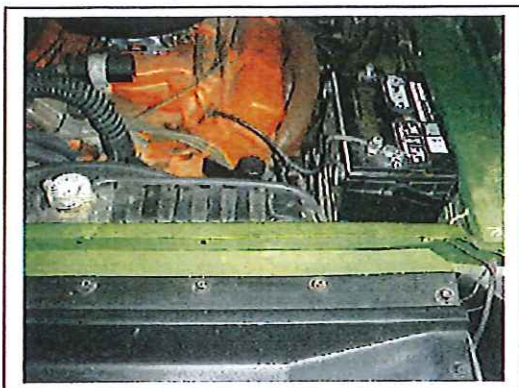
View of spliced trunk lid.

View of RH trunk lid hinge.



Anti-freeze decal is missing.

Idle Label is missing.



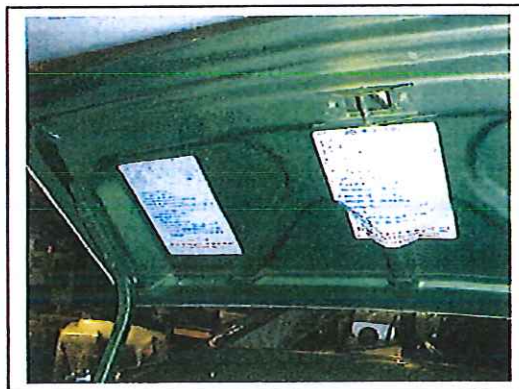
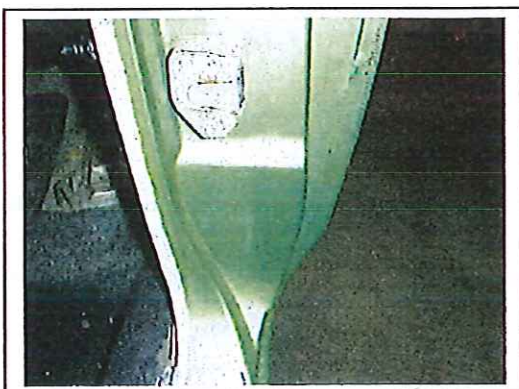
Do not wash or oil decal is missing.

Air cleaner Pie pan. **Should be Red.**



Tire Label is missing.

Both Jacking Instructions.



As far as people who may have NOS/excellent parts (including sheet metal) that you need for your Chrysler product, I recommend the following people:

Ken Burbach
301 Webster Street
Apple River, IL 61001
815 594-2205

Jeff Bobst
2111 E. Bremer
Waverly, IA 50677
319 352-2511

Roy Stephan
2909 Highland Street
LaCrosse, WI 54601
608 788-7272

Ron Fellwock
10004 Darnstadt Road
Evansville, IN 47710
812 867-3658

Kramer Automotive Specialties
763 Herman Road
Butler, PA 16001
412 285-5566 after 1PM

G & D Muscle Car Parts
415 Logan Avenue
Orange Park, IL 32065
904 272-1803

Tony D'Agostino
96 Red Bird Lane
Harrington, DE 19952
302 398-0821

J & J Cars & Parts
Route 4, Box 65
Starke, FL 32091
904 964-5039

For reproduction parts I recommend the following companies:

Year-One, Inc.
4559 Granite Drive
Tucker, GA 30084
800 950-9503

Hemispherical Products
P.O. Box 2144
Hemet, CA 92546
909 929-9767
909 929-8757 = Fax

Almost NOS
N87 W28288 Scott Lane
Hartland, WI 53029
262 538-1489 = Rich
920 262-1818 = John

Antique Auto Battery Company
2302 Old Mill Road
Hudson, OH 44236
800 426-7580

The Paddock
12399 Belcher Road, Suite 160
Largo, FL 33773
727 432-2500
800 338-0167

Hoffman's Winner Circle
3255 Bellinger Lane
Medford, OR 97501
541 770-2832
541 245-0787 = Fax

For 4-Speed transmissions and linkage:

Performance Motor Parts
2560 St. Route 48
Ludlow Falls, OH 45339
937 698-4259

For Clips, screws and small parts:

R/T Specialties
501 W. 8th Avenue-Suite 7
Mesa, AZ 85210
602 827-0171

For show car quality reproduction decals and instrumentation restoration.

Performance Car Graphics
723 Shannon Street
Tallahassee, FL 31311
850 878-1450
850 878-3161 = Fax

For authentic restoration products:

Roger Gibson Auto Restorations
% Frank Badalson
P. O. Box 35300
Richmond, VA 23235-0300
804 743-0570
804 743-8251 = Fax



37260 Sand Burr Lane
Prairie du Chien, WI 53821
(608) 326-6346 Office
(608) 326-8061 Fax

January 7, 2003

Dear Mopar Enthusiast,

Thanks for the opportunity to be of service to you. I have checked and I **do not** have your "Original" Production Broadcast Sheet (s). Sometimes this takes time, and sometimes it just does not happen.

The chances of locating your Original Broadcast Sheet are greater if you found a "wrong" one in your vehicle. If you did find a "wrong" Broadcast Sheet in your vehicle, if you have not already done so, please send me the original *or a copy* of the original. Sometimes I find owners do not keep up with licensing of their vehicle, especially if it is under restoration, same thing happens with titles.

In the meantime, I have a fireproof filing cabinet that I keep all Broadcast Sheets in and I do not charge a fee for re-uniting a Broadcast Sheet to it's proper owner, once the owner has proven ownership.

If you found no Broadcast Sheet in your vehicle, the chances are almost -0- that I will ever find a Broadcast Sheet for your vehicle. Not all cars came with a Broadcast Sheet. If you have found a Broadcast Sheet in your car, be thankful that you found one, no matter how poor the condition. Reproduction Window Stickers are available, but not Broadcast Sheets!

If you haven't looked for a Broadcast Sheet, they are usually found in the following 4 locations: + /

- 1.) Taped to the backside of the glove compartment
- 2.) Under or behind the front seat (s),
- 3.) Under or behind the rear seat (s),
- 4.) Under the carpeting, and
- 5.) Above the headliner, only if there is a reason to remove the headliner. (Do not bother looking above the gas tank; only GM and Ford put them there).

- ☐ I will need the Serial Number from your vehicle to continue with your request.
- ☐ Typically, the Los Angeles Assembly Plant does not leave a Broadcast Sheet in the car.
- ☐ I will need a color copy of your Broadcast Sheet to continue with your request.
- ☐ Please consider sending me the (or a color copy) incorrect Broadcast Sheet you found in your car.
- ☐ There is a fee for answering the questions you have asked in your letter, see menu for prices.
- ☐ 1975 and newer Broadcast Sheets were found on the floor, typically thrown away at the Dealership.
- ☐ If you have not sent me a pencil rubbing of your Fender Tag numbers, please do so. If I have your Fender Tag numbers on file, your Broadcast Sheet will be something I will always look for. If you do not have a Fender Tag, ask for a Fender Tag Restoration Form, and I will send you one.

If there is anything else I can do for you, do not hesitate to call or write.

Galen V. Govier

(Superbirds have the correct sheet, if any.) Most common Package cars with lost or incorrect Broadcast Sheets:
A11-1969 Charger 500, A11-1969 Charger DAYTONA, A53-1970 Challenger T/A, A53-1970 AAR 'Cuda.

Keep the Faith