

"CONCOURSE QUALITY, HOBBYIST PRICE"



www.martiauto.com
13238 W Butler Drive
El Mirage, AZ 85335
Phone (623) 935-2558
Fax (623) 935-2579

DELUXE MARTI REPORT®



Proud to display this symbol

Copyright Kevin Marti 2025

Thank you for your interest in our services. We have determined the following information for your vehicle from the Ford Database we have:

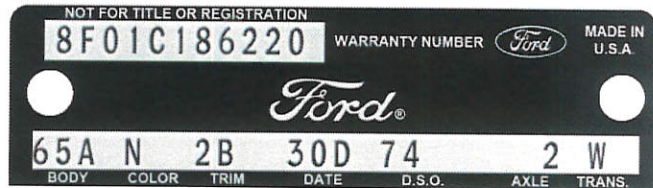
12345678901234567890123456789012345678901234567890123456789012345678901234567890
8F01C186220 N 2B C 30D289G 7E W2 C1 E 2 21 1 74I517 B

DOOR DATA PLATE INFORMATION

Serial Number **8F01C186220**

8 1968
 F Built at Dearborn
 01 Mustang 2-Door Hardtop
 C 289-2V V-8 Engine
 186220 Serial Number of this Ford scheduled for production at Dearborn

65A Mustang 2-Door Hardtop
 N Diamond Blue Paint, Ford #921-A
 2B Blue Vinyl Standard Bucket Seats
 30D Scheduled for build April 30, 1968
 74 Seattle DSO (District Sales Office)
 2 2.79 Conventional Rear Axle
 W C-4 Select Shift Automatic Transmission



IMPORTANT DATES

ORDER RECEIVED: --
 CAR SERIALIZED: **04/17/68**
 BUCKED: **04/30/68**
 SCHEDULED FOR BUILD: **04/30/68**
 ACTUALLY BUILT: **05/02/68**
 RELEASED: **05/07/68**
 SOLD: **06/27/68**

ORDER TYPE: BASIC OFF-STANDARD EQUIPMENT
 DSO ITEM #: 289G
 DEALER #: 74I517
 BOONE FORD SALES, INC.
 3121 PACIFIC
 OLYMPIA WA 98501

STATISTICS

Your vehicle was one of:

- 12,665** With this Paint Code
- 10,182** With these Paint/Trim Codes
- 114,973** With these Engine/Transmission Codes
- 6,218** Ordered from this DSO
- 124,544** With Power Steering

For the 1968 Mustang 2-Door Hardtop

Your vehicle was equipped with the following features:

- 6.95 X 14-4 Ply Rated White Sidewall Tires
- Power Steering
- AM Radio
- Deluxe Seat Belts
- Remote Control Left Hand Mirror
- Wheel Covers

Your vehicle was actually produced on May 2, 1968 -- two days behind schedule.

Kevin Marti